





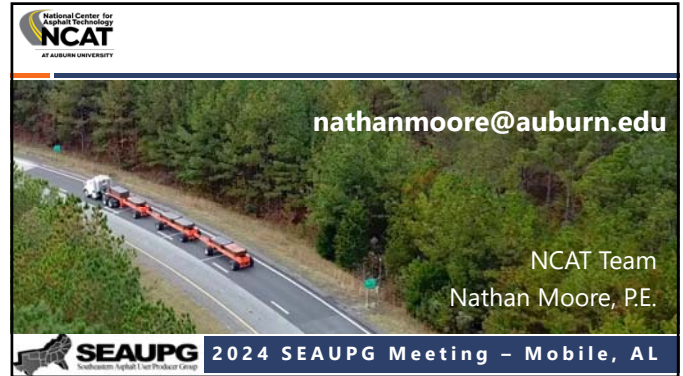
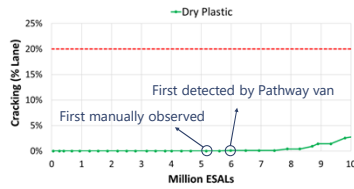






### Phase II Pavement Performance (10 MESALs)

- Minimal rutting (< 0.2 inches)
- Cracking
  - SBS control: no cracking
  - Wet plastic: no cracking
  - Dry plastic: 2.8%
- Steady IRI and MPD



### Summary

Comparison vs. SBS Control		Wet Plastic	Dry Plastic
Lab Mix characterization	Stiffness	=	↑
	Rutting resistance	=	↑
	Cracking resistance	↓	↓↓
Field Performance (10 MESALs)	Rutting	=	=
	Cracking	=	↓*

\* pending further monitoring



### Final Summary

- Continuing traffic on AG sections
- Monitoring performance and understanding effects of differences in base stiffness and mat density
- Differences in laboratory results will hopefully yield differences in performance
- Development of framework underway

