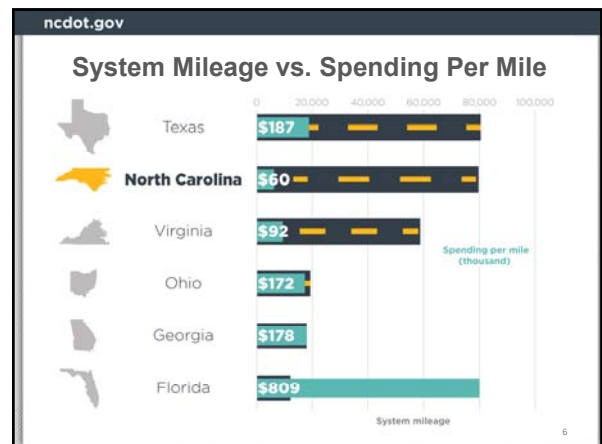
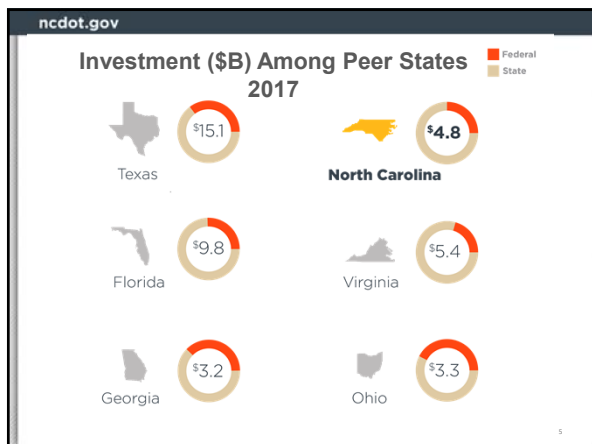
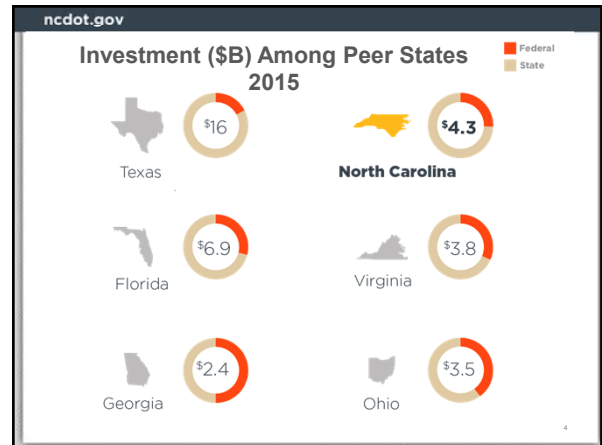
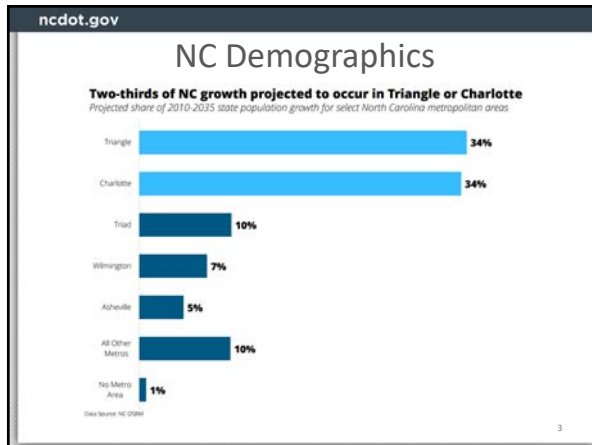


NORTH CAROLINA
Department of Transportation

2018 Southeastern Asphalt User/Producer Group Annual Meeting

Secretary Jim Trogdon, PE

11/13/2018



ncdot.gov

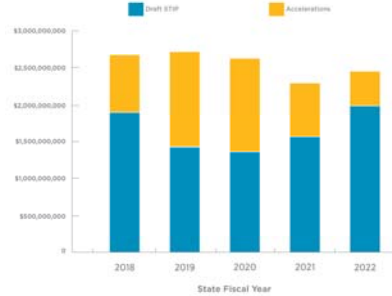
Why Cash Buildup?



7

ncdot.gov

Project Advancements

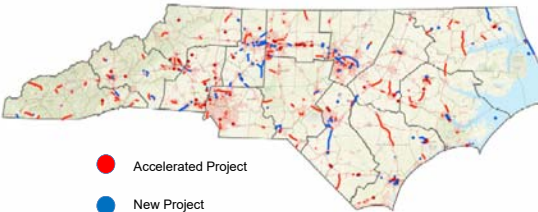


Over the 10-year STIP
Accelerated **350** Projects
Added **144** Projects to STIP

8

ncdot.gov

Changes Between the 2018-2027 Draft STIP & Final STIP

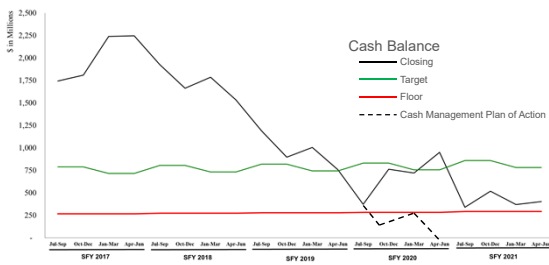


- Accelerated Project
- New Project

9

ncdot.gov

Addressing Balance – Accelerating Delivery



10

ncdot.gov

BUILD NC



- Modeled after GARVEE
- Will maintain integrity of STI
- Have appropriate oversight
- Be utilized at the Regional and Division project tiers (projects NOT eligible for GARVEE)
- Affordability will be determined by the State Treasurer

11

ncdot.gov

BUILD NC – Key Components

- If cash balance reaches \leq \$1B, NCDOT could request to leverage debt affordability
- NCDOT can request no more than \$300M in one year. Authority is for up to 10 years
- NC Treasurer would determine if appropriate and issue the debt
- All debt would be against future State revenue (motor fuels, DMV fees, highway use tax) and paid back by the Highway Trust Fund

12

ncdot.gov

BUILD NC – Key Components (cont.)

- Bond funds will be applied to the Regional and Division tiers of STI
- All projects receiving funding MUST go through STI prioritization
- No bonds will be sold unless NCDOT is projected to be ≤\$1B cash on hand at the time of issuance
- Allows NCDOT to maintain current level transportation investment


13

ncdot.gov

BUILD NC - Legislation

HB 1010 / S 758

- S 758 Passed Senate on 6/6/2018
- S 758 Passed House on 6/12/2018
- **Signed by the Governor on 6/20/2018**



14

ncdot.gov

Summary



- NC is growing and changing
- Multiple tools are necessary to meet immediate as well as future needs
- Accelerated project delivery has strong economic impact and enhances NC's economic competitiveness
- BUILD NC will support highest priority projects in rural AND urban locations

15